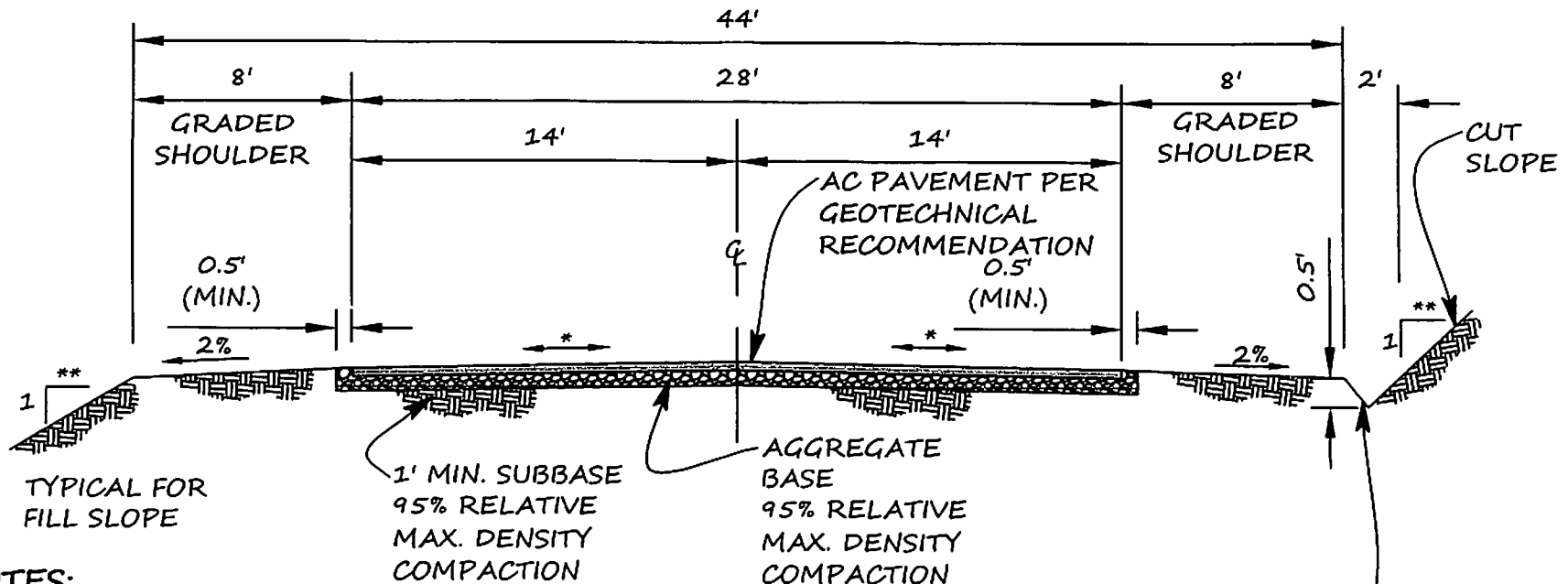


STANDARD DRAWINGS

| DRAWING NUMBER | DESCRIPTION | ISSUE DATE | LATEST REVISION |
|----------------|-------------------------------------------------------|---------------------|---------------------|
| 101 | Primary Roads - Typical Section | 07/18/88 | 06/16/08 |
| 102 | Secondary Roads - Typical Section | 07/18/88 | 06/16/08 |
| 103 | Short Cul-de-Sac Streets - Typical Section | 07/18/88 | 06/16/08 |
| 104 | 4' A.C. Swale | 10/14/92 | 06/16/08 |
| 105 | 3' A.C. Swale | 10/14/92 | 06/16/08 |
| 106 | Type "I" Downdrain | 09/15/87 | 06/16/08 |
| 107 | Type "II" Downdrain | 09/10/90 | 06/16/08 |
| 108 | A.C. Berm Detail | 03/14/90 | 06/16/08 |
| 109 | Asphalt Trench Repair | 04/17/90 | 07/18/17 |
| 110 | 6" Monument Box Detail | 11/22/91 | 06/16/08 |
| 111 | Driveway Apron with Culvert | 10/15/97 | 06/16/08 |
| 112 | Driveway Apron | 10/15/97 | 06/16/08 |
| 113 | A.C. Swale @ Driveway | 12/15/88 | 06/16/08 |
| 114 | Culvert Catchbasin Detail | 12/15/88 | 06/16/08 |
| 115 | Street Sign | 04/14/97 | 06/16/08 |
| | | | |
| | | | |
| | | | |

*Revision Dates: 02/28/01; 09/15/06, 06/16/08, 07/18/17 *deleted.*



NOTES:

1. WHEN SWALE REQUIRED SEE D.L.C.S.D. STD. DWG. 104 & 105.
2. WHEN A.C. BERM REQUIRED SEE D.L.C.S.D. STD. DWG. 108.
3. AC PAVEMENT PER SECTION 302-5 STD. SPECIFICATIONS FOR PUBLIC WORKS CONSTRUCTION (GREEN BOOK), CURRENT EDITION. THICKNESS PER GEOTECHNICAL RECOMMENDATION, 0.25' MINIMUM.
4. AGGREGATE BASE PER SEC. STD. SPEC'S. EXCEPT THICKNESS PER GEOTECHNICAL RECOMMENDATION, 0.33' MINIMUM.
5. DRAINAGE OVER SLOPE PERMITTED ONLY BY SPECIAL APPROVAL. PROVIDE BERM OR SWALE AS REQUIRED.
6. SUBBASE SHALL BE SCARIFIED & COMPACTED AS DIRECTED BY INSPECTOR OR GEOTECHNICAL ENGINEER TOP 1' TO BE COMPACTED TO 95% OF RELATIVE MAX. DENSITY UNLESS OTHERWISE DIRECTED.

GRADE 2' WIDE x 0.5' DEEP DITCH @ TOE OF SLOPE TYPICAL FOR CUT SLOPE

- * - CROSS SLOPE AS SHOWN ON PLAN
- ** - MAX. CUT/FILL SLOPES 2:1 UNLESS OTHERWISE APPROVED. GEOTECHNICAL REVIEW MAY BE REQUIRED FOR STEEPER SLOPES.



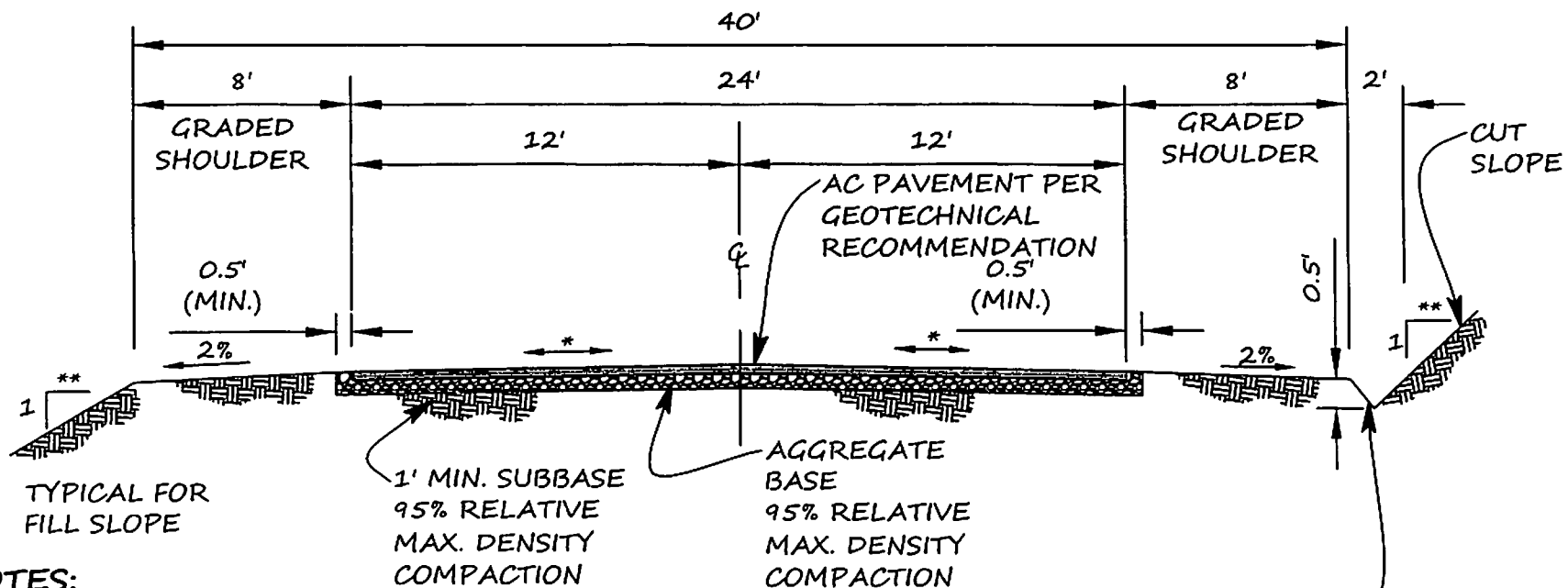
DE LUZ COMMUNITY SERVICE DISTRICT

| | | |
|------------------|------------------|---------------------|
| SCALE: N.T.S. | APPROVED BY: | DRAWN BY: S.E.H. |
| DATE: 6/16/08 | GENERAL MANAGER | REVISED: / / |

PRIMARY ROADS

TYPICAL SECTION

STD. NO.:
101



NOTES:

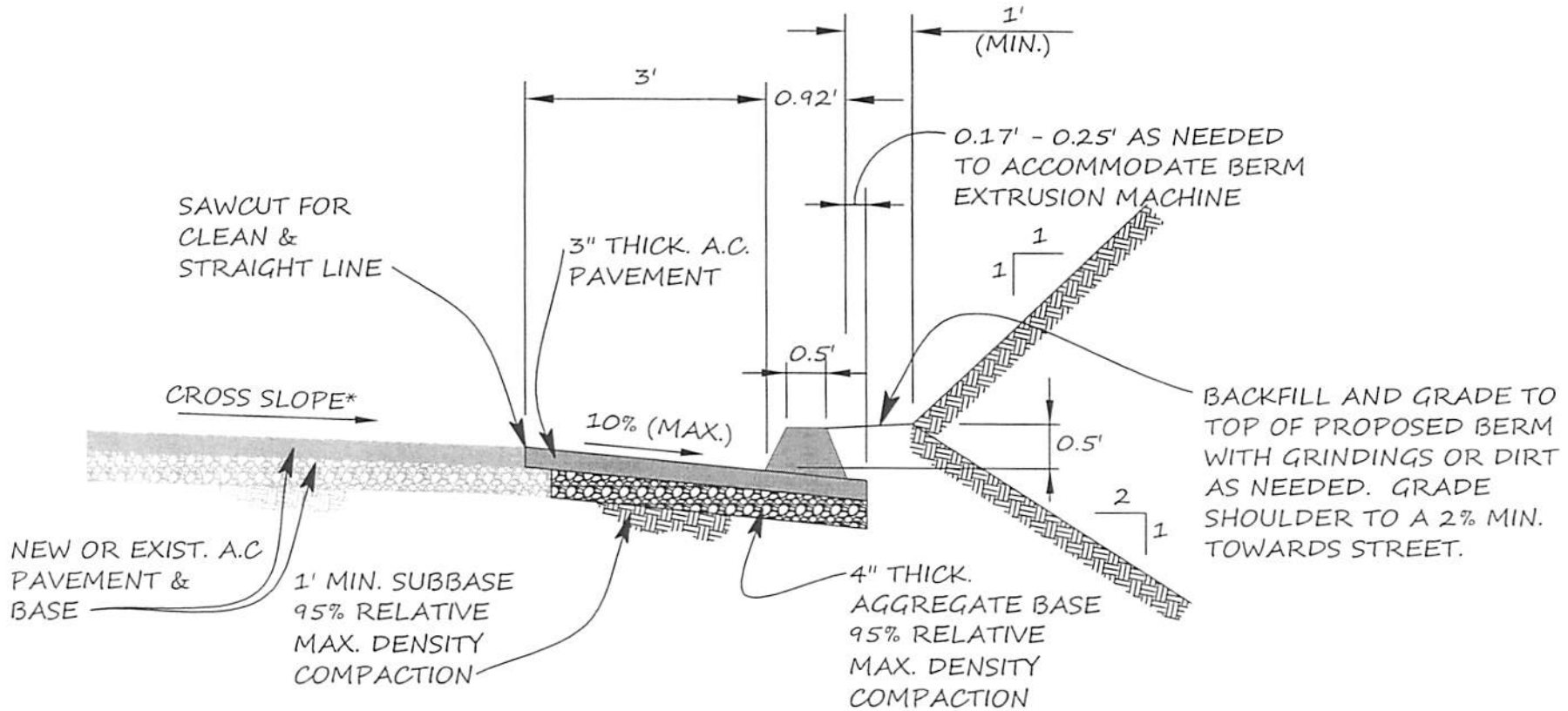
1. WHEN SWALE REQUIRED SEE D.L.C.S.D. STD. DWG. 104 & 105.
2. WHEN A.C. BERM REQUIRED SEE D.L.C.S.D. STD. DWG. 108.
3. AC PAVEMENT PER SECTION 302-5 STD. SPECIFICATIONS FOR PUBLIC WORKS CONSTRUCTION (GREEN BOOK), CURRENT EDITION. THICKNESS PER GEOTECHNICAL RECOMMENDATION, 0.25' MINIMUM.
4. AGGREGATE BASE PER SEC. STD. SPEC'S. EXCEPT THICKNESS PER GEOTECHNICAL RECOMMENDATION, 0.33' MINIMUM.
5. DRAINAGE OVER SLOPE PERMITTED ONLY BY SPECIAL APPROVAL. PROVIDE BERM OR SWALE AS REQUIRED.
6. SUBBASE SHALL BE SCARIFIED & COMPACTED AS DIRECTED BY INSPECTOR OR GEOTECHNICAL ENGINEER TOP 1' TO BE COMPACTED TO 95% OF RELATIVE MAX. DENSITY UNLESS OTHERWISE DIRECTED.

GRADE 2' WIDE x 0.5' DEEP DITCH @ TOE OF SLOPE TYPICAL FOR CUT SLOPE

- * - CROSS SLOPE AS SHOWN ON PLAN
- ** - MAX. CUT/FILL SLOPES 2:1 UNLESS OTHERWISE APPROVED. GEOTECHNICAL REVIEW MAY BE REQUIRED FOR STEEPER SLOPES.



| DE LUZ COMMUNITY SERVICES DISTRICT | | |
|------------------------------------|-------------------------------------------------------|---------------------|
| SCALE: N.T.S. | APPROVED BY: <i>[Signature]</i> GENERAL MANAGER | DRAWN BY: S.E.H. |
| DATE: 6/16/08 | | REVISED: 1/6/11 |
| SECONDARY ROADS & CUL-DE-SAC ROADS | | |
| TYPICAL SECTION | | STD. NO.: 102 |




* 2% CROSS SLOPE UNLESS OTHERWISE NOTED

AC BERM PER
STD. No. 108
SHOULDER SUB-BASE
COMPACTED TO 95%



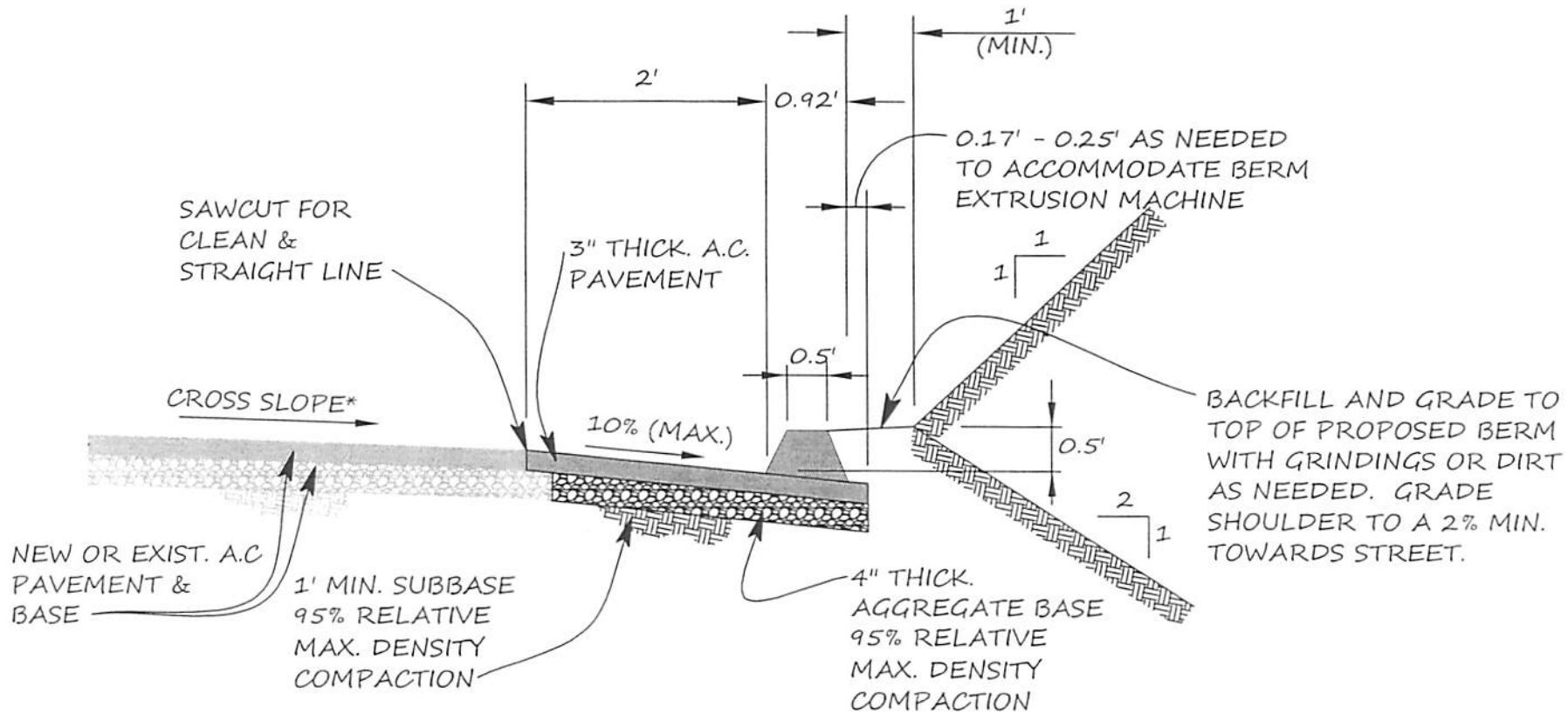
DE LUZ COMMUNITY SERVICE DISTRICT

| | | |
|------------------|-------------------------------------------------------------------------------------------------------|---------------------|
| SCALE: N.T.S. | APPROVED BY:  | DRAWN BY: S.E.H. |
| DATE: 6/16/08 | GENERAL MANAGER | REVISED: / / |

3' A.C. SHOULDER W/BERM

STANDARD DRAWING

STD. NO.:
104



* 2% CROSS SLOPE UNLESS OTHERWISE NOTED

AC BERM PER
STD. No. 108
SHOULDER SUB-BASE
COMPACTED TO 95%



DE LUZ COMMUNITY SERVICE DISTRICT

SCALE:
N.T.S.
DATE:
6/16/08

APPROVED BY:

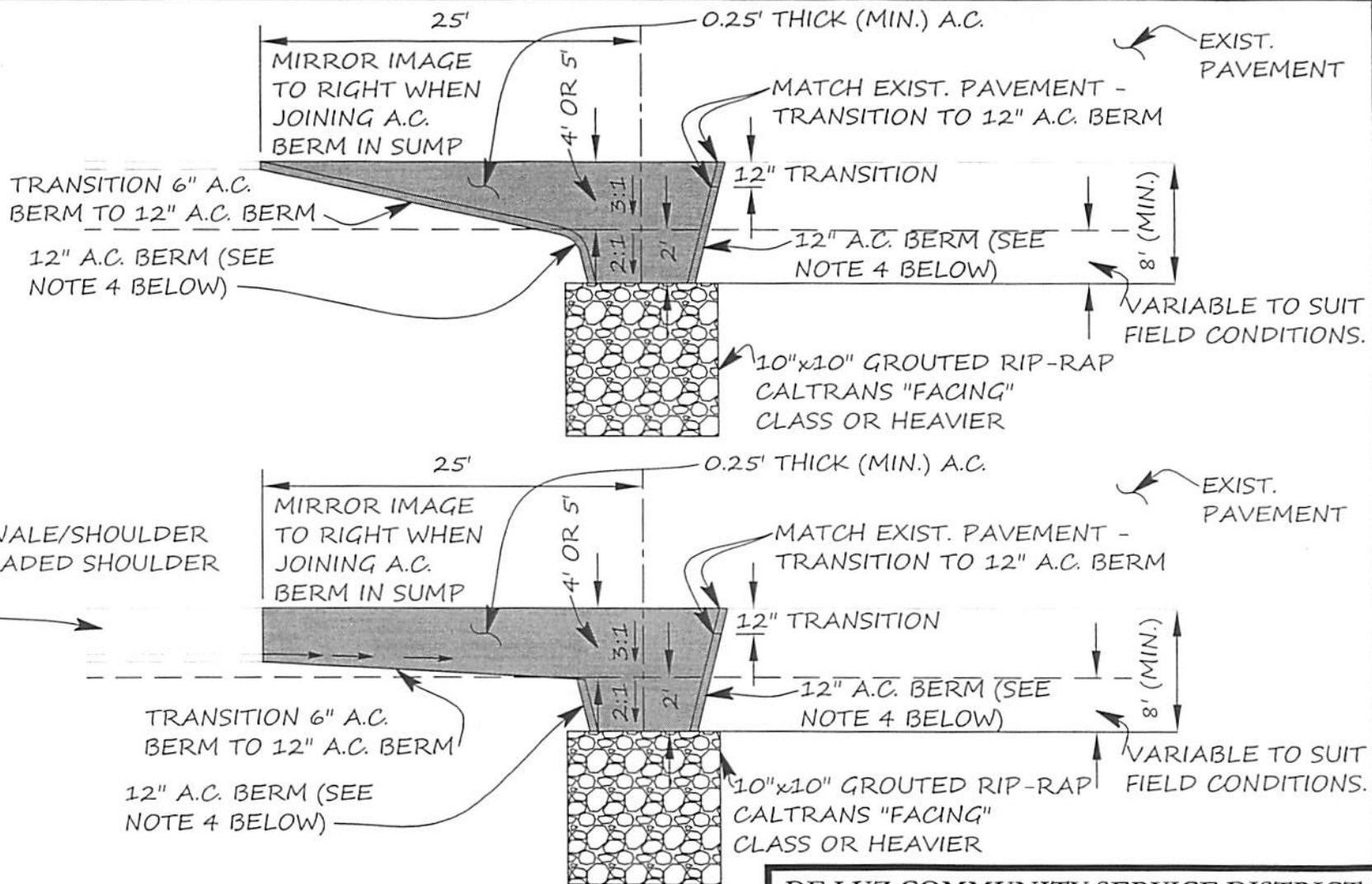
[Signature]
GENERAL MANAGER

DRAWN BY:
S.E.H.
REVISED:
/ /

2' A.C. SHOULDER W/BERM

STANDARD DRAWING


STD. NO.:
105



NOTES:

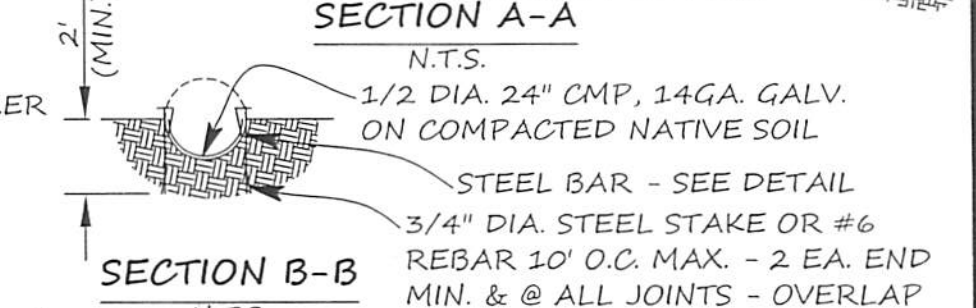
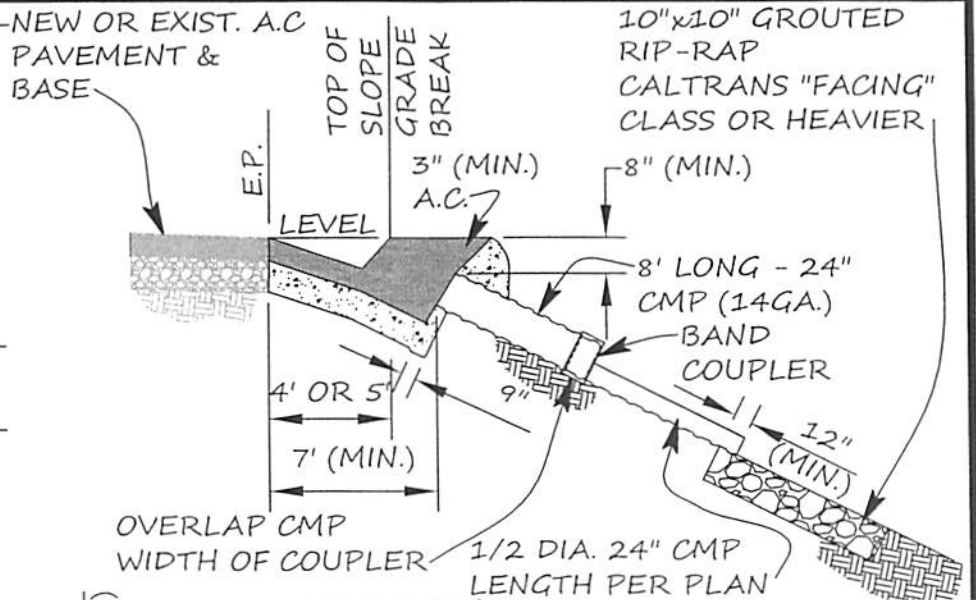
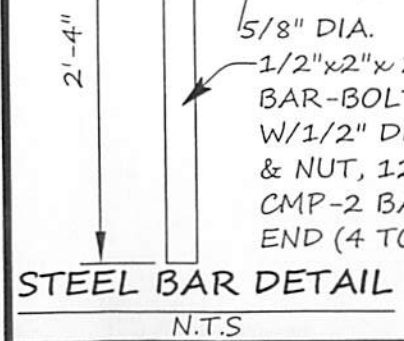
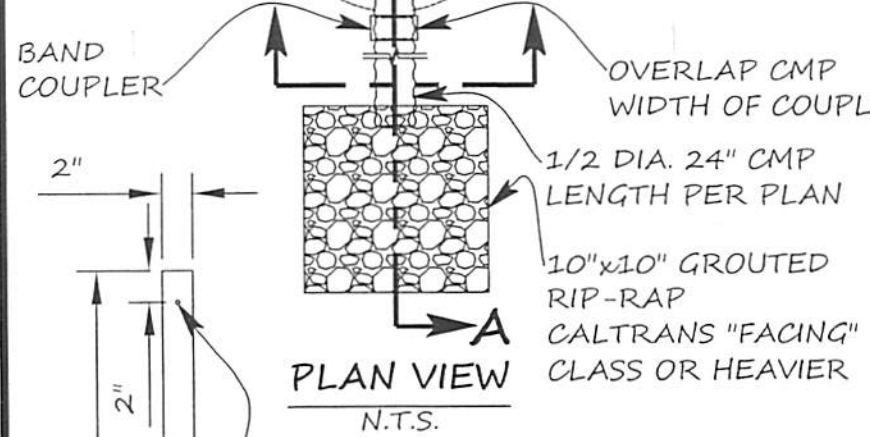
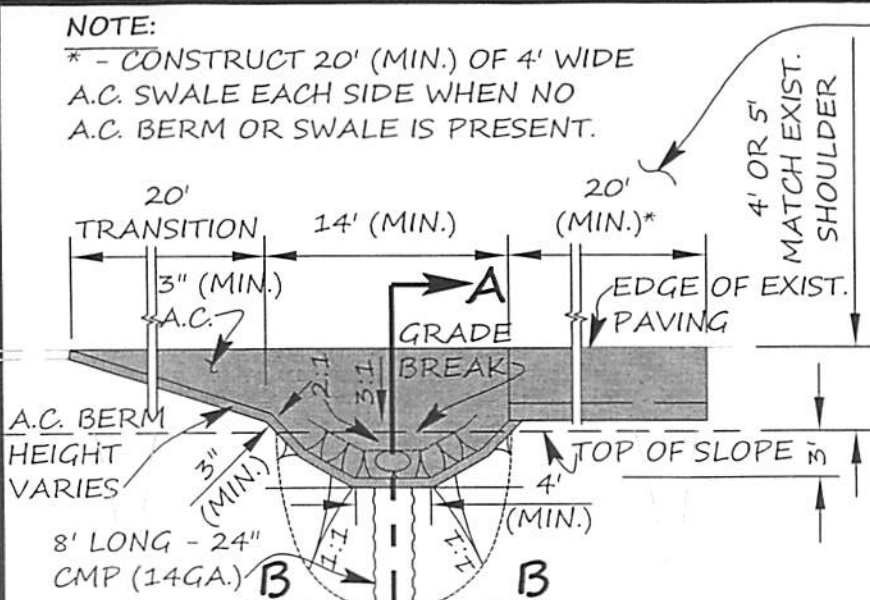
1. 4' SHOULDER W/BERM PER D.L.C.S.D. STD. #104.
2. 6" A.C. BERM PER D.L.C.S.D. STD. #108.
3. AGGREGATE BASE MAY BE REQUIRED BY INSPECTOR UNDER A.C. DOWNDRAIN.
4. BACKFILL BEHIND 12" BERMS ON BOTH SIDES OF DOWNDRAIN TO ALLOW DRAINAGE TO FLOW TO DOWNDRAIN, WHEN NECESSARY.



| DE LUZ COMMUNITY SERVICE DISTRICT | | |
|-----------------------------------|-------------------------------------------------------------------------------------------------------|-------------------------|
| SCALE: N.T.S. | APPROVED BY:  | DRAWN BY: S.E.H. |
| DATE: 6/16/08 | GENERAL MANAGER | REVISED: / / |
| TYPE "I" DOWNDRAIN | | |
| STANDARD DRAWING | | STD. NO.: 106 |

NOTE:

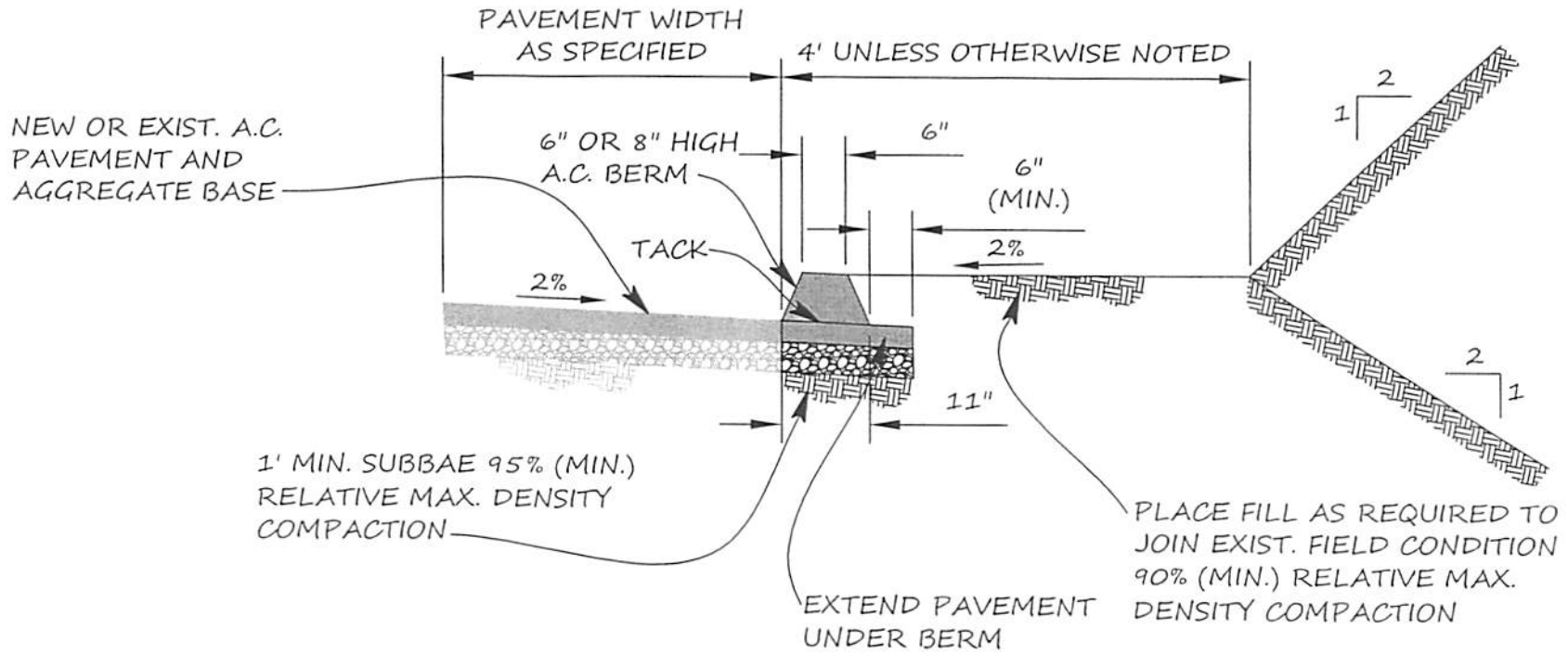
* - CONSTRUCT 20' (MIN.) OF 4' WIDE A.C. SWALE EACH SIDE WHEN NO A.C. BERM OR SWALE IS PRESENT.



- NOTES:**
- 4' SHOULDER W/BERM PER D.L.C.S.D. STD. #104 or #105.
 - 6" A.C. BERM PER D.L.C.S.D. STD. #108.




| | | |
|-----------------------------------|-------------------------------------------------------|---------------------|
| DE LUZ COMMUNITY SERVICE DISTRICT | | |
| SCALE: N.T.S. | APPROVED BY: <i>[Signature]</i> GENERAL MANAGER | DRAWN BY: S.E.H. |
| DATE: 6/16/08 | | REVISED: / / |
| TYPE "II" DOWNDRAIN | | |
| STANDARD DRAWING | | STD. NO.: 107 |

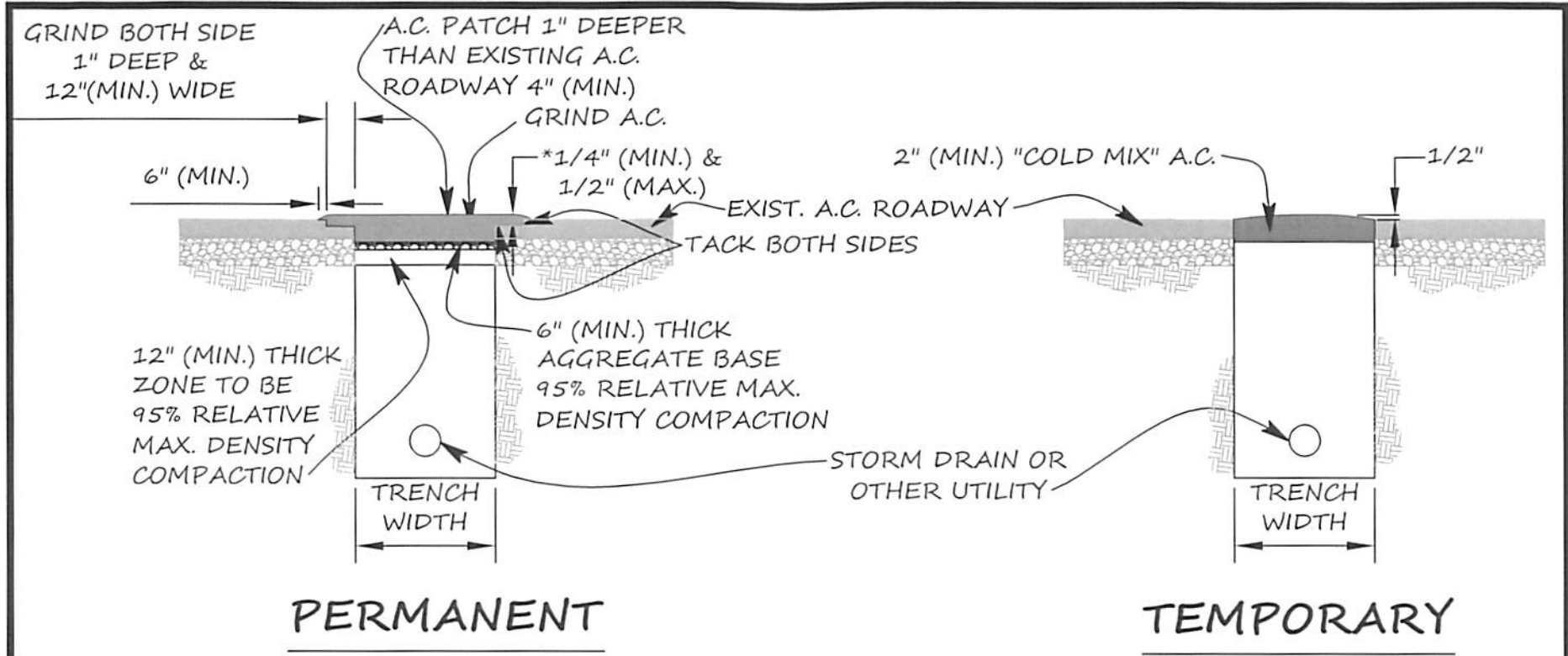


NOTE:

UNIT PRICE FOR 6" BERM SHALL INCLUDE FULL COMPENSATION FOR BACKFILL, COMPACTION, AND FINE GRADING BEHIND BERM.



| | | |
|-----------------------------------|-------------------------------------------------------------------------------------------------------|---------------------|
| DE LUZ COMMUNITY SERVICE DISTRICT | | |
| SCALE: N.T.S. | APPROVED BY:  | DRAWN BY: S.E.H. |
| DATE: 6/16/08 | GENERAL MANAGER | REVISED: / / |
| A.C. BERM DETAIL | | |
| STANDARD DRAWING | | STD. NO.: 108 |



NOTES:

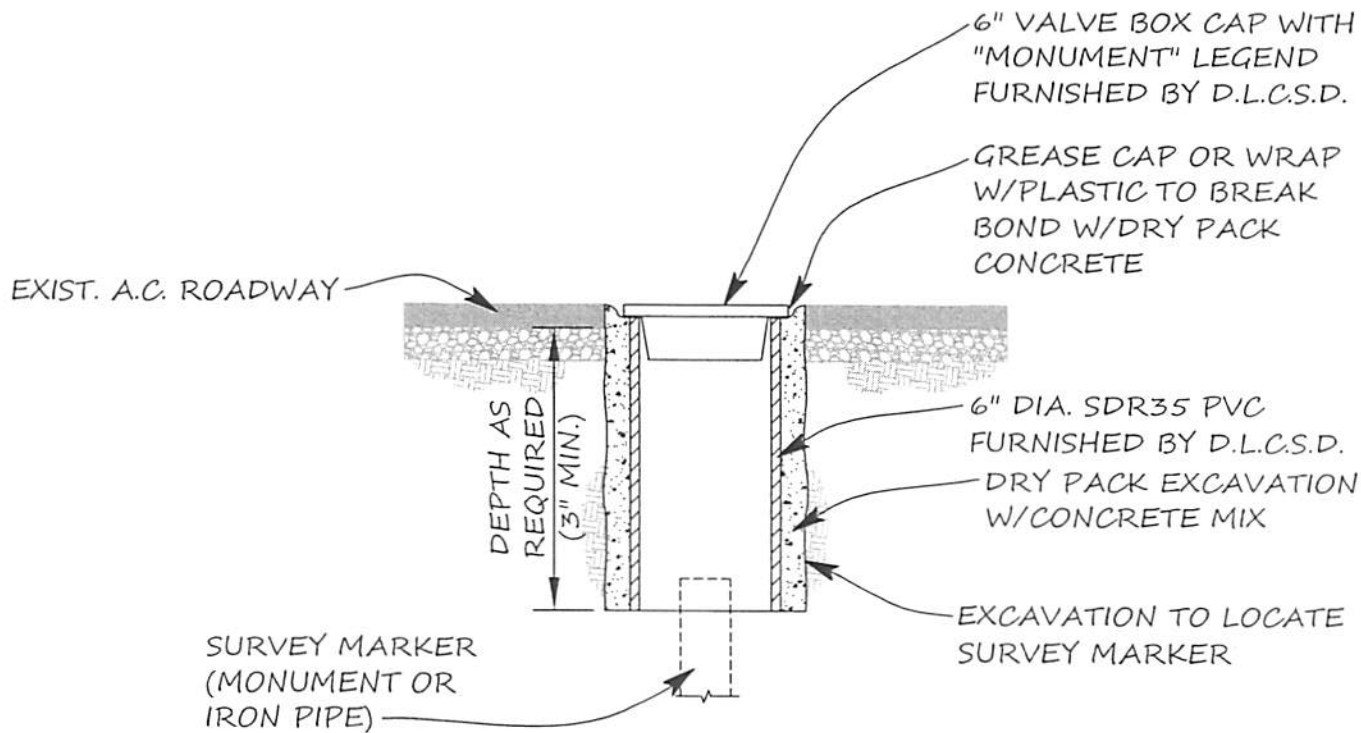
1. A.C. SHALL BE 1-C1-AR-4000.
2. PREFERRED BACKFILL: 2-SACK CONCRETE SLURRY FULL DEPTH OF TRENCH ABOVE PIPE ZONE TO FINISHED SURFACE. GRIND TO 4" (MIN.) DEPTH, PAVE W/A.C. AS SHOWN.
3. PIPE BEDDING, INSTALLATION & BACKFILL PER SECTION 306 STD. SPECIFICATIONS.
4. ALTERNATE BACKFILL WITH IMPORTED GRANULAR MATERIAL OR NATIVE MATERIAL SUBJECT TO INSPECTOR'S APPROVAL. COMPACTION TEST(S) MUST BE TAKEN PRIOR TO PLACING PERMANENT REPAIR. TEST REPORTS MUST BE SUBMITTED AND APPROVED PRIOR TO RELEASE OF PERMIT SECURITIES.

NOTES:

1. TEMPORARY REPAIR 30 DAYS MAXIMUM.
2. FAILURE TO MAINTAIN PATCH WILL IMMEDIATELY REVOKE PERMIT. DISTRICT MAY HIRE CONTRACTOR TO CORRECT AT PERMITEE'S EXPENSE.



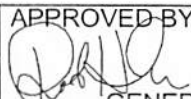
| | | |
|-------------------------------------------|------------------------------------|-------------------------|
| DE LUZ COMMUNITY SERVICES DISTRICT | | |
| SCALE: N.T.S. | APPROVED BY: <i>[Signature]</i> | DRAWN BY: S.E.H. |
| DATE: 6/16/08 | GENERAL MANAGER | REVISED: 7/18/17 |
| ASPHALT TRENCH REPAIR | | |
| TYPICAL SECTION | | STD. NO.: 109 |

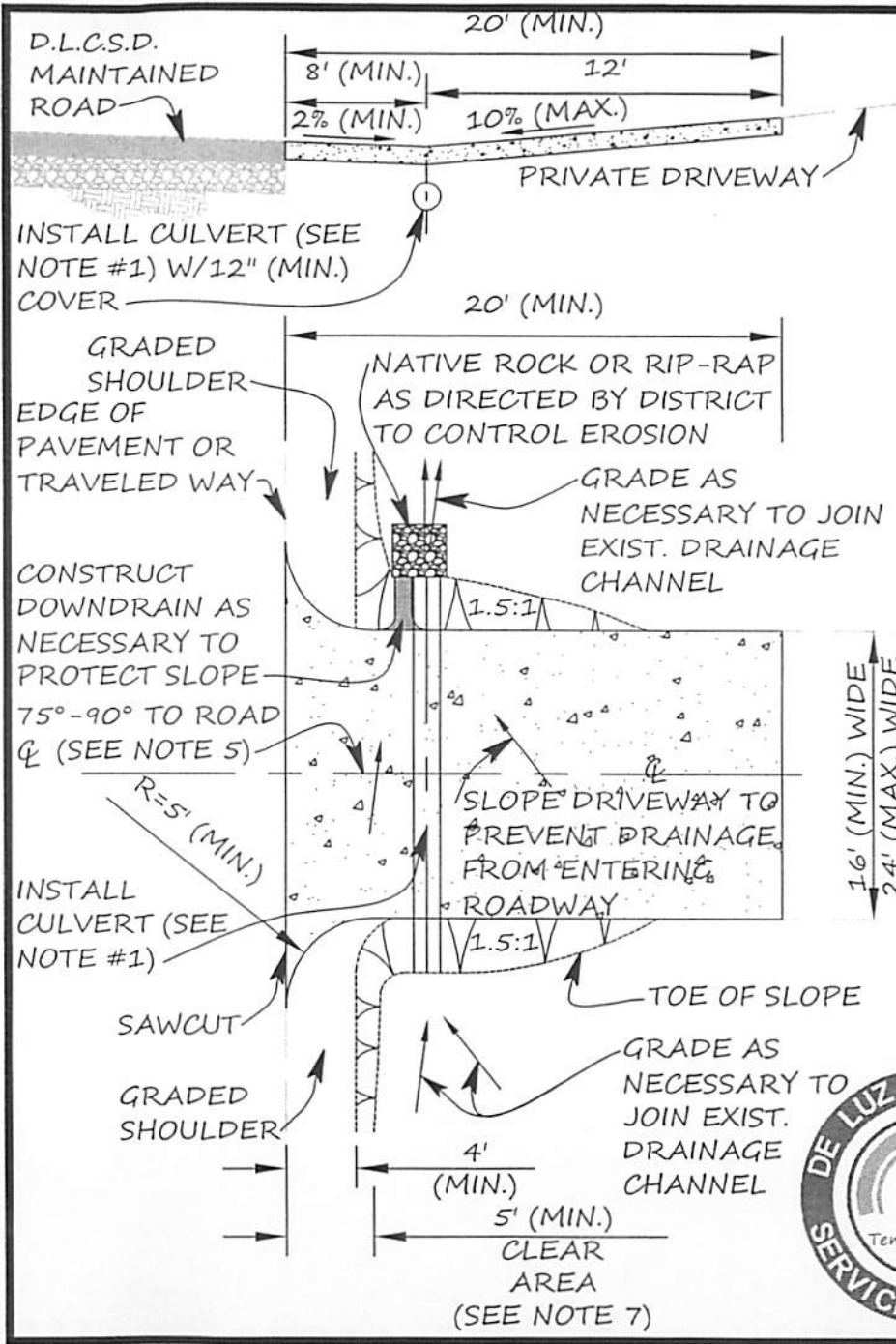


NOTES:

1. VALVE CAP TO BE FURNISHED BY D.L.C.S.D.
2. PVC PIPE TO BE FURNISHED BY D.L.C.S.D. PARTY INSTALLING SHALL CUT PIPE TO REQUIRED LENGTH.
3. MONUMENT BOX TO BE USED FOR EXISTING PAVEMENT W/NEW OR EXISTING SURVEY MARKERS.




| | | |
|------------------------------------------|-------------------------------------------------------------------------------------------------------|-------------------------|
| DE LUZ COMMUNITY SERVICE DISTRICT | | |
| SCALE: N.T.S. | APPROVED BY:  | DRAWN BY: S.E.H. |
| DATE: 6/16/08 | GENERAL MANAGER | REVISED: / / |
| 6" MONUMENT BOX DETAIL | | |
| STANDARD DRAWING | | STD. NO.: 110 |

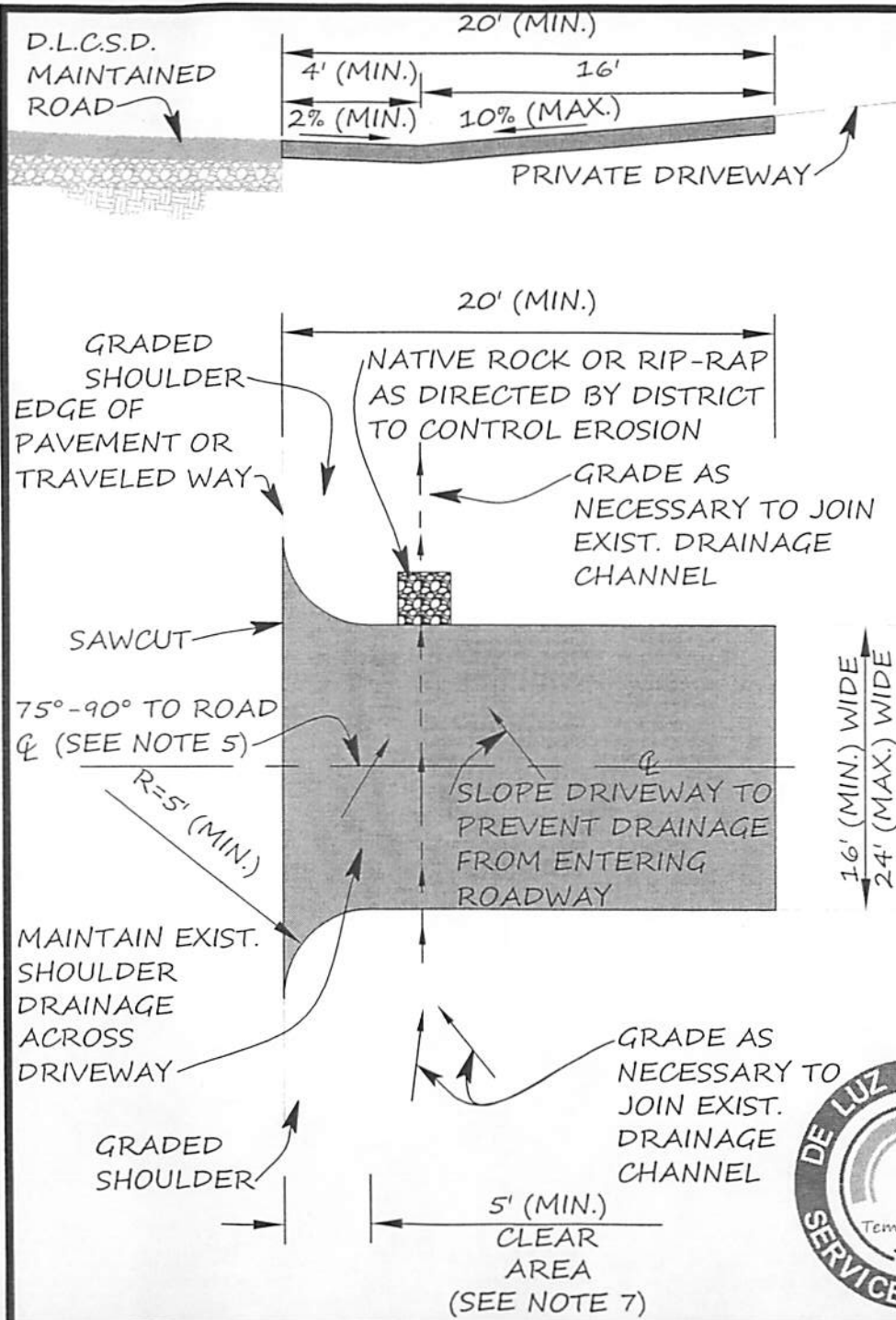


NOTES:

1. MINIMUM SIZE CULVERT SHALL BE 18" DIA. OR 22"x 18" ARCH PIPE.
2. ALLOWABLE PIPE MATERIALS:
 - A. GALV. C.S.P. OR SPIRAL RIB PIPE, $t = 0.079"$.
 - B. CORR. HDPE PIPE W/ SMOOTH LINING.
 - C. REINF. CONC. PIPE 1000-D
 - D. PVC STORM DRAIN, SDR 35 (HYDRAULIC CALCULATIONS TO JUSTIFY PIPE SIZE MAY BE REQUIRED).
3. DRIVEWAY SURFACING SHALL BE 3" THICK (MIN.) A.C. OR 4" P.C.C. ON COMPACTED SOIL.
4. SPECIAL APPROVAL BY D.L.C.S.D. REQUIRED FOR INSTALLATION OF DRIVEWAY CULVERT. A.C. BERM, IF PRESENT, MUST BE SAW-CUT TO PROVIDE A 3' MIN. TRANSITION FROM 6" CURB HEIGHT TO 1-1/2" LIP ACROSS DRIVEWAY APRON. APRON MUST BE CONSTRUCTED TO PREVENT ROADWAY DRAINAGE FROM ENTERING DRIVEWAY.
5. ANGLE FROM ϕ OF ROAD WAY TO ϕ OF DRIVEWAY MUST NOT EXCEED 15° EITHER DIRECTION FROM PERPENDICULAR W/O SPECIAL PERMISSION BY DISTRICT.
6. FOR TRANSITION FROM A.C. SWALE, SEE D.L.C.S.D. STD. DRAWING #113.
7. DRIVEWAY CULVERT IS TO BE MAINTAINED BY PROPERTY OWNER.
8. FIVE FOOT AREA ADJACENT TO PAVEMENT TO BE KEPT CLEAR OF ALL OBSTRUCTIONS. LANDSCAPING LIMITED TO 12" (MAX.) HEIGHT SHRUBS & GROUND COVER ONLY.



| | | |
|------------------------------------------|-------------------------------------------------------------------------------------------------------|-------------------------|
| DE LUZ COMMUNITY SERVICE DISTRICT | | |
| SCALE: N.T.S. | APPROVED BY:  | DRAWN BY: S.E.H. |
| DATE: 6/16/08 | GENERAL MANAGER | REVISED: / / |
| DRIVEWAY APRON W/CULVERT | | |
| STANDARD DRAWING | | STD. NO.: 111 |

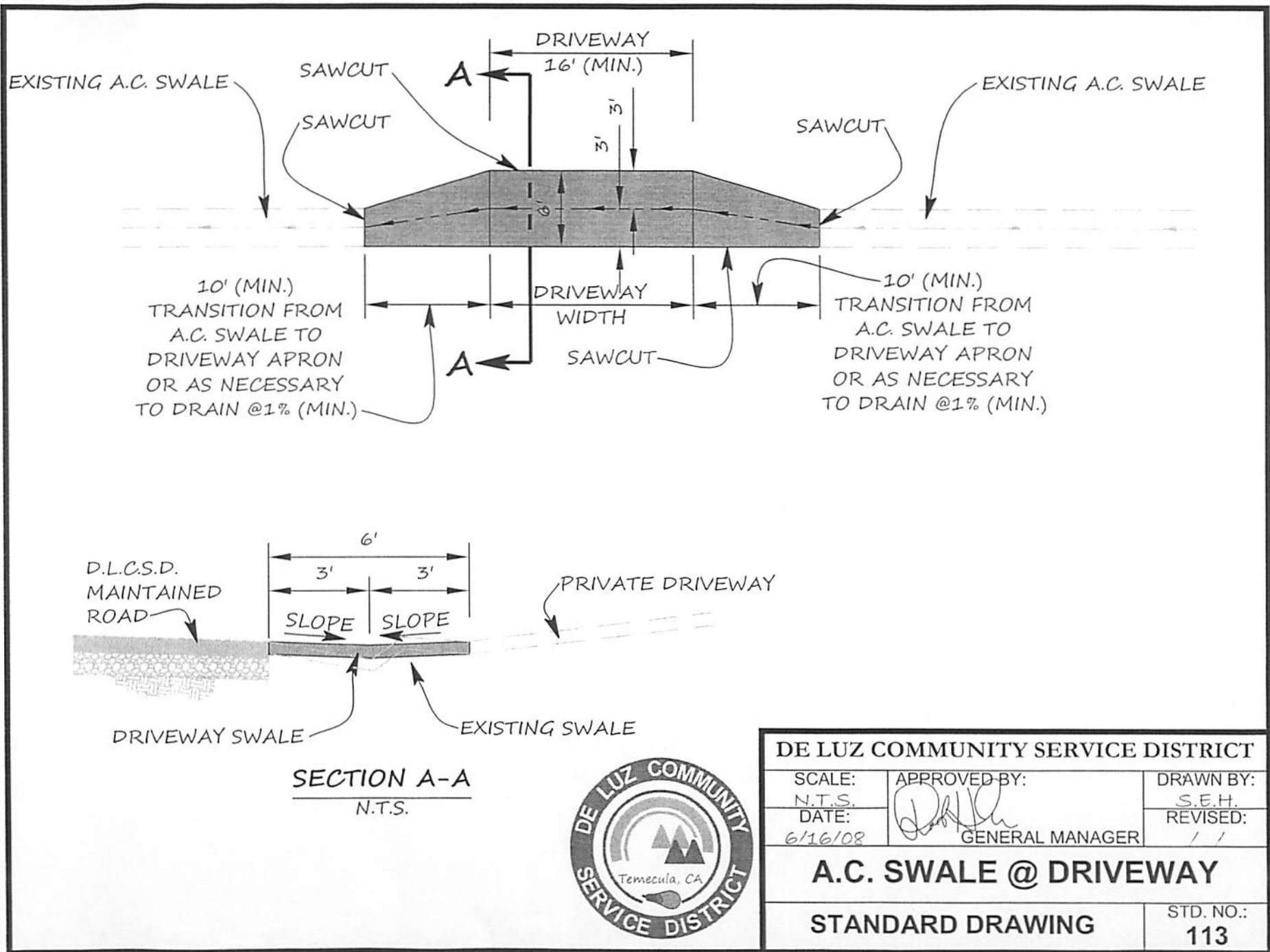


NOTES:

1. DRIVEWAY SURFACING SHALL BE 0.25' THICK (MIN.) A.C. OR 0.33' P.C.C. ON COMPACTED SOIL.
2. SEE D.L.C.S.D. STD. DRAWING #111 IF DRIVEWAY CULVERT IS REQUIRED. SPECIAL APPROVAL REQUIRED.
3. A.C. CURB, IF PRESENT, MUST BE SAWCUT TO PROVIDE A 3' (MIN.) TRANSITION FROM 6" CURB HEIGHT TO 1-1/2" LIP ACROSS DRIVEWAY APRON. APRON MUST BE CONSTRUCTED TO PREVENT ROADWAY DRAINAGE FROM ENTERING DRIVEWAY.
4. FOR TRANSITION FROM A.C. SWALE - SEE D.L.C.S.D. STD. DRAWING #113.
5. ANGLE FROM ϕ OF ROADWAY TO ϕ OF DRIVEWAY MUST NOT EXCEED 15° EITHER DIRECTION FROM PERPENDICULAR WITHOUT SPECIAL PERMISSION BY DISTRICT.
6. FIVE FOOT AREA ADJACENT TO PAVEMENT TO BE KEPT CLEAR OF ALL OBSTRUCTIONS. LANDSCAPE LIMITED TO 12" (MAX.) HEIGHT SHRUBS & GROUND COVER ONLY.




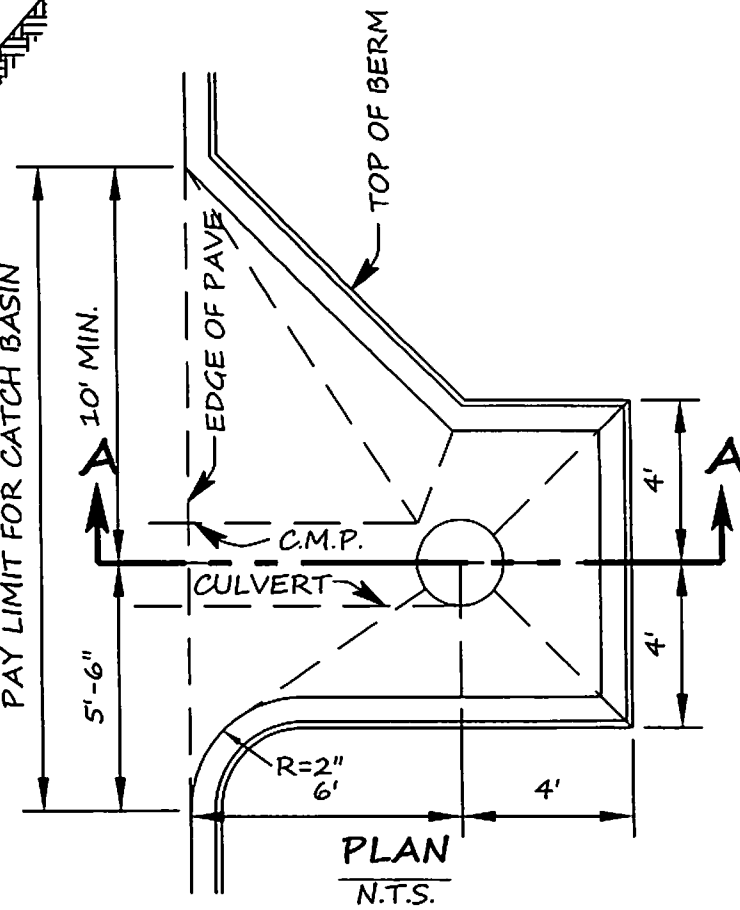
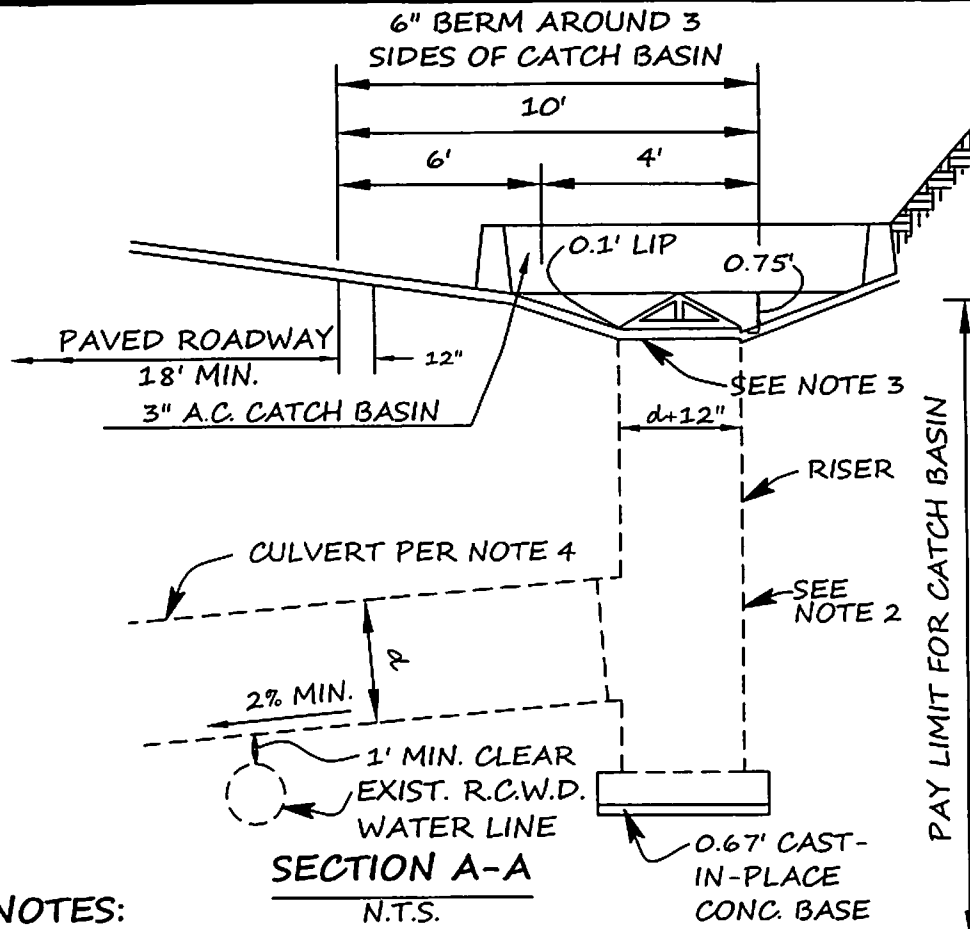
| | | |
|------------------------------------------|-------------------------------------------------------------------------------------------------------|-------------------------|
| DE LUZ COMMUNITY SERVICE DISTRICT | | |
| SCALE: N.T.S. | APPROVED BY:  | DRAWN BY: S.E.H. |
| DATE: 6/16/08 | GENERAL MANAGER | REVISED: / / |
| DRIVEWAY APRON | | |
| STANDARD DRAWING | | STD. NO.: 112 |



SECTION A-A
N.T.S.




| | | |
|------------------------------------------|--------------------------------------------------------------------------------------------------------------------------|-------------------------|
| DE LUZ COMMUNITY SERVICE DISTRICT | | |
| SCALE: N.T.S. | APPROVED BY:  GENERAL MANAGER | DRAWN BY: S.E.H. |
| DATE: 6/16/08 | | REVISED: / / |
| A.C. SWALE @ DRIVEWAY | | |
| STANDARD DRAWING | | STD. NO.: 113 |

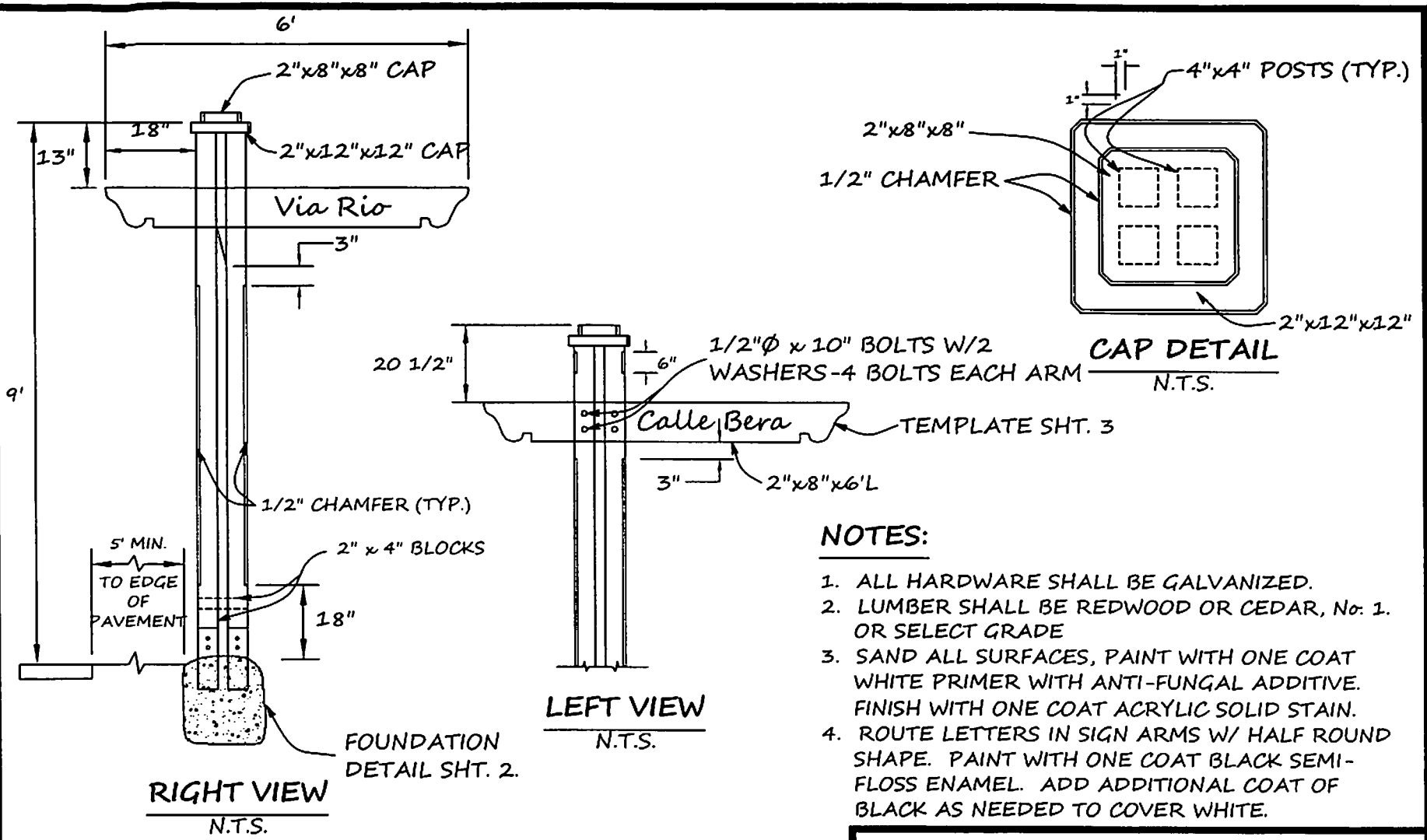


NOTES:

1. DIMENSIONS SHOWN MAY BE ADJUSTED TO MEET FIELD CONDITIONS. AC APRON OPTIONAL AS DIRECTED BY DISTRICT.
2. SHOP-FABRICATED TEE W/WATER-TIGHT COUPLING AT OUTLET.
3. SHOP-FABRICATED TRASH RACK, FASTEN TO RISER W/BAND COUPLER. GALVANIZE AFTER FABRICATION.
4. RISER & CULVERT MATERIAL: SEE NOTE 2, STD. NO. 111. RISER SHALL BE SAME MATERIAL AS CULVERT.



| | | |
|------------------------------------------|-------------------------------------------------------------------------------------------------------|-------------------------|
| DE LUZ COMMUNITY SERVICE DISTRICT | | |
| SCALE: N.T.S. | APPROVED BY:  | DRAWN BY: S.E.H. |
| DATE: 6/16/08 | GENERAL MANAGER | REVISED: / / |
| CULVERT CATCH BASIN DETAIL | | |
| STANDARD DRAWING | | STD. NO.: 114 |

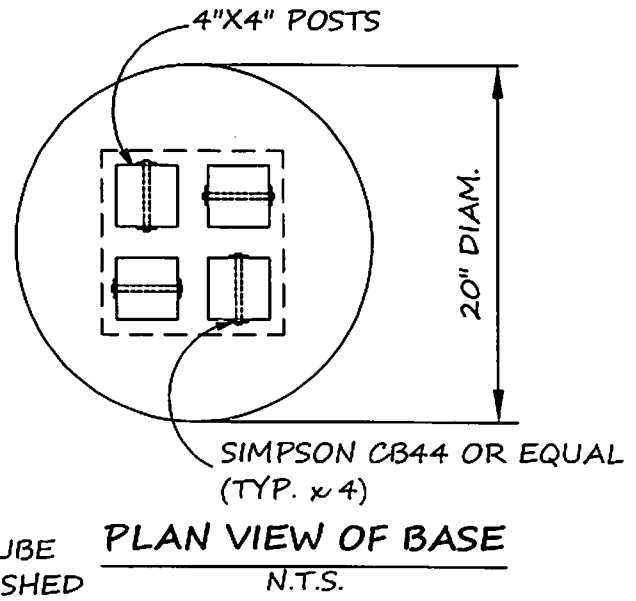
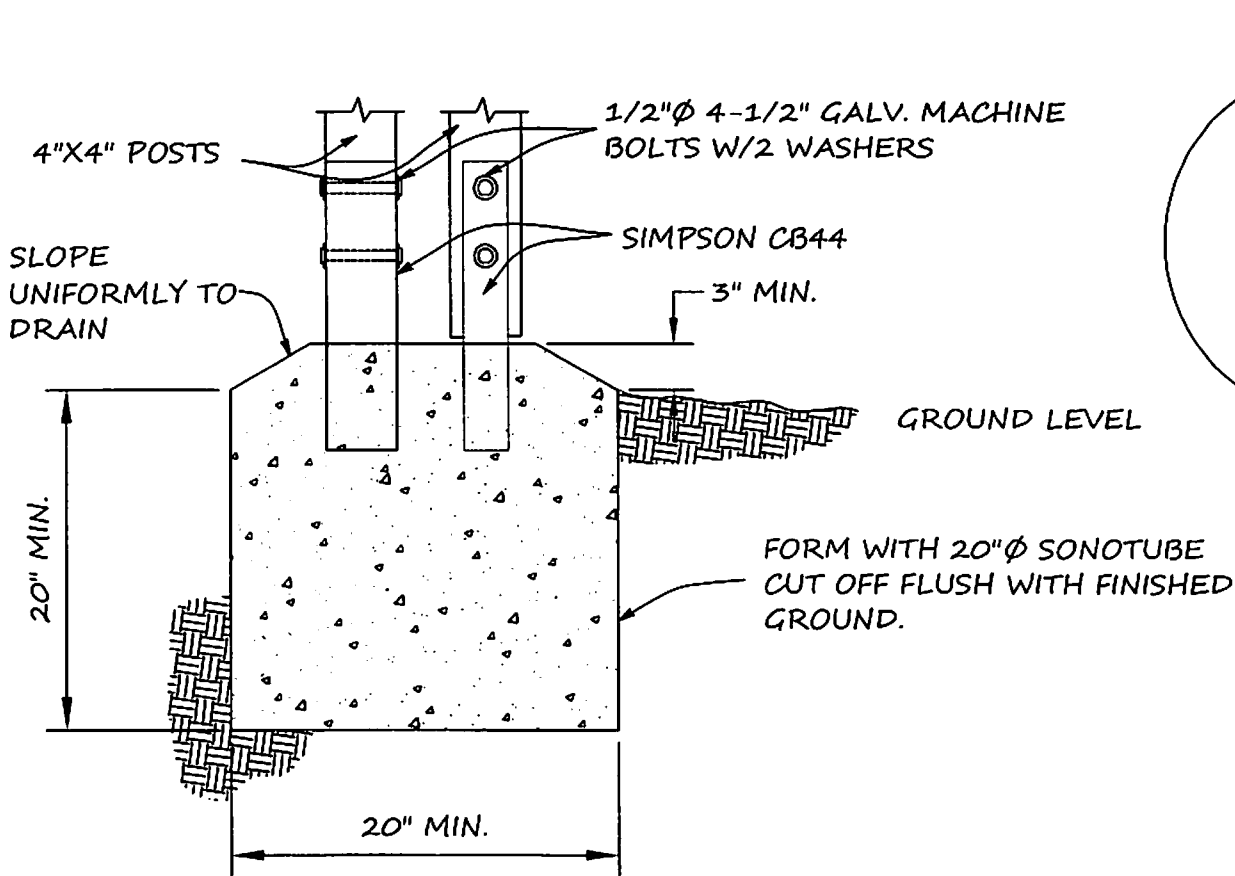


NOTES:

1. ALL HARDWARE SHALL BE GALVANIZED.
2. LUMBER SHALL BE REDWOOD OR CEDAR, No. 1. OR SELECT GRADE
3. SAND ALL SURFACES, PAINT WITH ONE COAT WHITE PRIMER WITH ANTI-FUNGAL ADDITIVE. FINISH WITH ONE COAT ACRYLIC SOLID STAIN.
4. ROUTE LETTERS IN SIGN ARMS W/ HALF ROUND SHAPE. PAINT WITH ONE COAT BLACK SEMI-FLOSS ENAMEL. ADD ADDITIONAL COAT OF BLACK AS NEEDED TO COVER WHITE.



| | | |
|------------------------------------------|--------------------------------------------------------------------------------------------------------------------------|----------------------------------------|
| DE LUZ COMMUNITY SERVICE DISTRICT | | |
| SCALE: N.T.S. | APPROVED BY:  GENERAL MANAGER | DRAWN BY: S.E.H. |
| DATE: 6/16/08 | | REVISED: / / |
| STREET SIGN | | |
| STANDARD DRAWING | | SHT. 1 OF 2 STD. NO.: 115 |



| | | |
|------------------------------------------|-------------------------------------------------------|----------------------------------------|
| DE LUZ COMMUNITY SERVICE DISTRICT | | |
| SCALE: N.T.S. | APPROVED BY: <i>[Signature]</i> GENERAL MANAGER | DRAWN BY: S.E.H. |
| DATE: 6/16/08 | | REVISED: / / |
| STREET SIGN | | |
| STANDARD DRAWING | | SHT. 2 OF 2 STD. NO.: 115 |